

## 燈 具 實 物 照 片



|                     |         |                          |
|---------------------|---------|--------------------------|
| Light Output Ratio: | 64.0%   |                          |
| Luminaire Power:    | 20.99 W |                          |
| SHR Nominal:        | 0.00    | Calculated using the TM5 |
| SHR Maximum:        | 0.30    | fine grid method.        |

C角度范围: 0度 - 360度  
 C角度间隔: 30.0度  
 测试速度: 快速  
 环境温度: 25.3℃  
 测试人员: zoe  
 测试日期: 2024-7-26

Y角度范围: 0度 - 180度  
 Y角度间隔: 1.0度  
 测试系统: 远方(EVERFINE)GO-SPEX500\_V1系统 V2.00.461  
 环境湿度: 65.0%  
 测试距离: 3.160米 [K=1.0000]  
 备注: LAMP: BXRE-30G1000-A-83 Ra:90  
 LENS: PM-1083 15R  
 DRIVER: PUP20A-1WMC 500mA  
 30minutes warm-up

## 灯具配光曲线及特征面照片

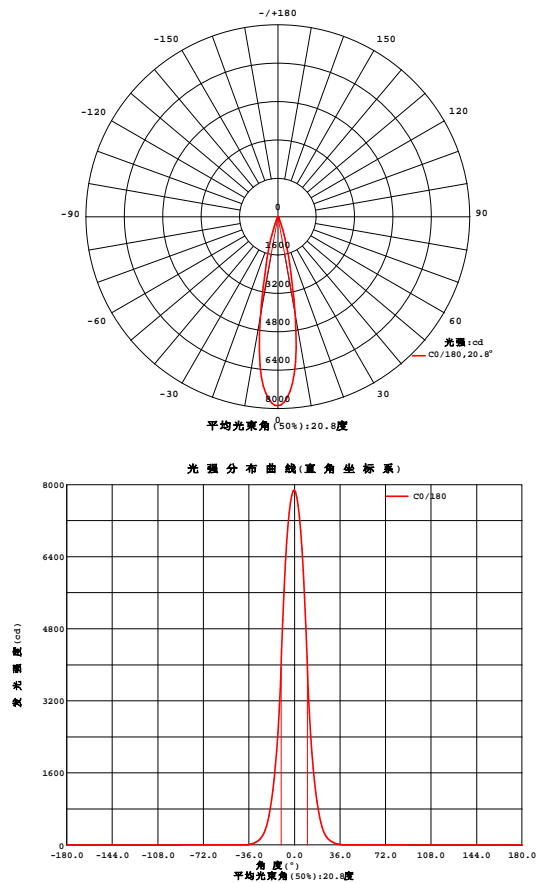


Fig. C0/C180

C角度范围: 0度 - 360度  
C角度间隔: 30.0度  
测试速度: 快速  
环境温度: 25.3℃  
测试人员: zoe  
测试日期: 2024-7-26

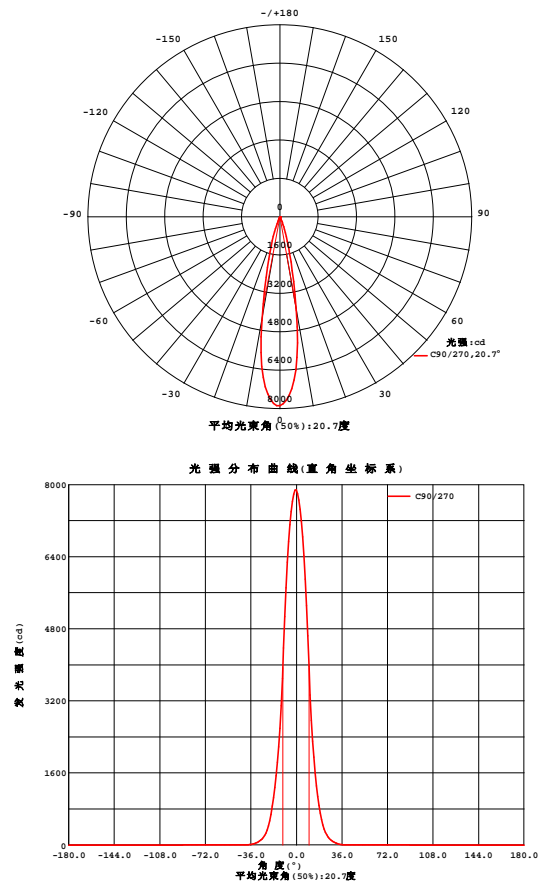


Fig. C90/C270

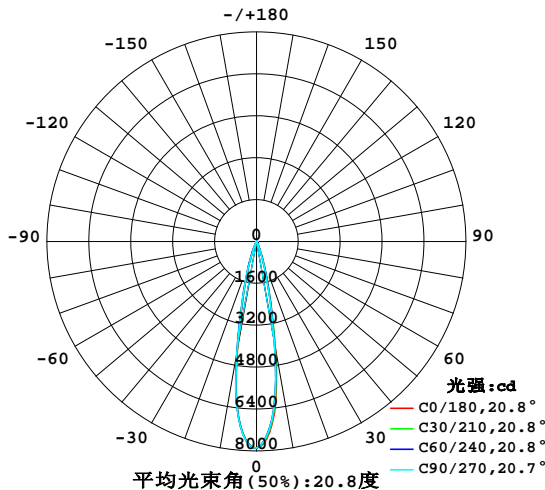
Y角度范围: 0度 - 180度  
Y角度间隔: 1.0度  
测试系统: 远方(EVERFINE)GO-SPEX500\_V1系统 V2.00.461  
环境湿度: 65.0%  
测试距离: 3.160米 [K=1.0000]  
备注: LAMP: BXRE-30G1000-A-83 Ra: 90  
LENS: PM-1083 15R  
DRIVER: PUP20A-1WMC 500mA  
30minutes warm-up

## 室内灯具光度数据

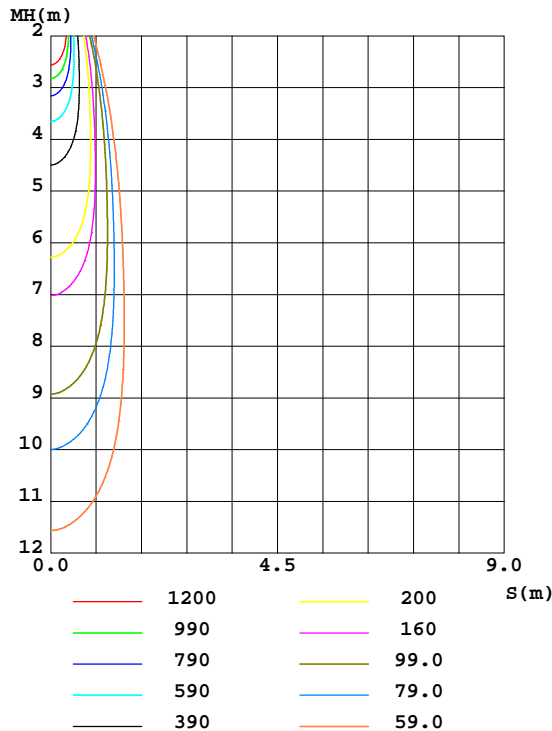
|   |                            |                  |
|---|----------------------------|------------------|
| 实测参数: U:120.19V I:0.1755A P:20.993W PF:0.9940 Freq:59.98Hz<br>实检光通: 1897.7x1 lm |                            |                  |
| 灯具名称: 2418.121-LEA-15   | 灯具类型:                      | 灯具重量:            |
| 灯具规格: 3000K   | 外型尺寸:                      | 测试编号: 2407260947 |
| 制造厂商: RISE  | 发光口面: 0.0064m <sup>2</sup> | 遮光角:             |

| 光源数据      |           | 光度数据     |        |                   |          | 光效: 57.84 lm/W |
|-----------|-----------|----------|--------|-------------------|----------|----------------|
| 型号        | Bridgelux | 峰值光强(cd) | 7879   | S/MH(C0/180)      | 0.35     |                |
| 标称功率(W)   | 20        | 灯具效率(%)  | 64.0   | S/MH(C90/270)     | 0.36     |                |
| 额定电源电压(V) | 120       | 总光通量(lm) | 1214.2 | η UP,DN(C0-180)   | 0.0,30.9 |                |
| 额定光通量(lm) | 1897.7    | CIE分类    | 直接     | η UP,DN(C180-360) | 0.0,33.1 |                |
| 灯具内光源数(只) | 1         | 上射光通比(%) | 0.0    | CIBSE SHR NOM     | 0.00     |                |
| 实测电源电压(V) | 120       | 下射光通比(%) | 64.0   | CIBSE SHR MAX     | 0.30     |                |

室内灯具配光曲线



空间等照度曲线(单位:lx)



C角度范围: 0度 - 360度  
C角度间隔: 30.0度  
测试速度: 快速  
环境温度: 25.3℃  
测试人员: zoe  
测试日期: 2024-7-26

Y角度范围: 0度 - 180度  
Y角度间隔: 1.0度  
测试系统: 远方(EVERFINE)GO-SPEX500\_V1系统 V2.00.461  
环境湿度: 65.0%  
测试距离: 3.160米 [K=1.0000]  
备注: LAMP: BXRE-30G1000-A-83 Ra: 90  
LENS: PM-1083 15R  
DRIVER: PUP20A-1WMC 500mA  
30minutes warm-up

## 灯具环带光通量

环带光通量:

| $\gamma$ | C0     | C45    | C90    | C135   | C180   | C225   | C270   | C315   | $\gamma(^{\circ})$ | 环      | 总     | %lum, lamp |
|----------|--------|--------|--------|--------|--------|--------|--------|--------|--------------------|--------|-------|------------|
| 10       | 4169   | 4056   | 3967   | 4068   | 4282   | 4359   | 4375   | 4344   | 0- 10              | 577.0  | 577.0 | 47.5, 30.4 |
| 20       | 623.9  | 601.7  | 564.0  | 605.2  | 651.6  | 689.0  | 679.2  | 690.0  | 10- 20             | 503.2  | 1080  | 89, 56.9   |
| 30       | 65.08  | 74.38  | 59.23  | 76.68  | 67.52  | 83.69  | 70.17  | 82.38  | 20- 30             | 113.3  | 1194  | 98.3, 62.9 |
| 40       | 5.197  | 6.667  | 4.371  | 5.850  | 4.451  | 7.092  | 5.233  | 7.008  | 30- 40             | 17.65  | 1211  | 99.8, 63.8 |
| 50       | 0.7988 | 1.429  | 0.5886 | 0.8457 | 0.4356 | 1.323  | 0.8317 | 1.361  | 40- 50             | 2.322  | 1214  | 99.9, 63.9 |
| 60       | 0.3618 | 0.3404 | 0.1414 | 0.1863 | 0.1816 | 0.2968 | 0.2849 | 0.3490 | 50- 60             | 0.4449 | 1214  | 100, 64    |
| 70       | 0.0694 | 0.0371 | 0.0428 | 0.0559 | 0.0883 | 0.0447 | 0.0329 | 0.0397 | 60- 70             | 0.1309 | 1214  | 100, 64    |
| 80       | 0.0583 | 0.0264 | 0.0447 | 0.0368 | 0.0524 | 0.0250 | 0.0350 | 0.0415 | 70- 80             | 0.0396 | 1214  | 100, 64    |
| 90       | 0      | 0      | 0      | 0      | 0      | 0      | 0      | 0      | 80- 90             | 0.0325 | 1214  | 100, 64    |
| 100      | 0      | 0      | 0      | 0      | 0      | 0      | 0      | 0      | 90-100             | 0      | 1214  | 100, 64    |
| 110      | 0      | 0      | 0      | 0      | 0      | 0      | 0      | 0      | 100-110            | 0      | 1214  | 100, 64    |
| 120      | 0      | 0      | 0      | 0      | 0      | 0      | 0      | 0      | 110-120            | 0      | 1214  | 100, 64    |
| 130      | 0      | 0      | 0      | 0      | 0      | 0      | 0      | 0      | 120-130            | 0      | 1214  | 100, 64    |
| 140      | 0      | 0      | 0      | 0      | 0      | 0      | 0      | 0      | 130-140            | 0      | 1214  | 100, 64    |
| 150      | 0      | 0      | 0      | 0      | 0      | 0      | 0      | 0      | 140-150            | 0      | 1214  | 100, 64    |
| 160      | 0      | 0      | 0      | 0      | 0      | 0      | 0      | 0      | 150-160            | 0      | 1214  | 100, 64    |
| 170      | 0      | 0      | 0      | 0      | 0      | 0      | 0      | 0      | 160-170            | 0      | 1214  | 100, 64    |
| 180      | 0      | 0      | 0      | 0      | 0      | 0      | 0      | 0      | 170-180            | 0      | 1214  | 100, 64    |
| 单位: °    | 光强: cd |        |        |        |        |        |        |        |                    | 单位: lm |       |            |

C角度范围: 0度 - 360度  
 C角度间隔: 30.0度  
 测试速度: 快速  
 环境温度: 25.3℃  
 测试人员: zoe  
 测试日期: 2024-7-26

$\gamma$ 角度范围: 0度 - 180度  
 $\gamma$ 角度间隔: 1.0度  
 测试系统: 远方(EVERFINE)GO-SPEX500\_V1 系统 V2.00.461  
 环境湿度: 65.0%  
 测试距离: 3.160米 [K=1.0000]  
 备注: LAMP: BXRE-30G1000-A-83 Ra: 90  
 LENS: PM-1083 15R  
 DRIVER: PUP20A-1WMC 500mA  
 30minutes warm-up

## 灯具亮度限制曲线

实测参数: U:120.19V I:0.1755A P:20.993W PF:0.9940 Freq:59.98Hz  
实检光通: 1897.7x1 lm

灯具名称: 2418.121-LEA-15

灯具类型:

灯具重量:

灯具规格: 3000K

外型尺寸:

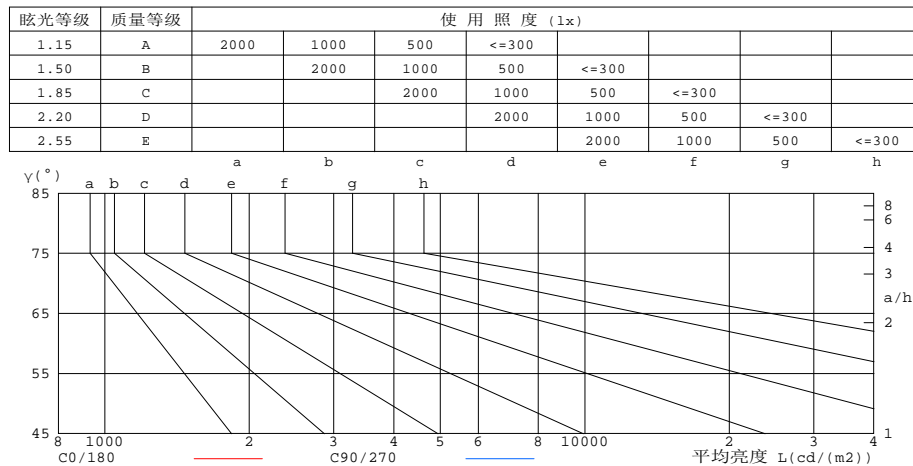
测试编号: 2407260947

制造厂商: RISE

发光口面: 0.0064m<sup>2</sup>

遮光角:

有光侧边灯具的亮度限制曲线



| 平均亮度值 cd/(m2) |        |         |
|---------------|--------|---------|
| γ(°)          | C0/180 | C90/270 |
| 85            | 107    | 73      |
| 80            | 52     | 40      |
| 75            | 34     | 25      |
| 70            | 32     | 20      |
| 65            | 53     | 37      |
| 60            | 113    | 44      |
| 55            | 140    | 91      |
| 50            | 194    | 143     |
| 45            | 675    | 492     |

c角度范围: 0度 - 360度  
c角度间隔: 30.0度  
测试速度: 快速  
环境温度: 25.3℃  
测试人员: zoe  
测试日期: 2024-7-26

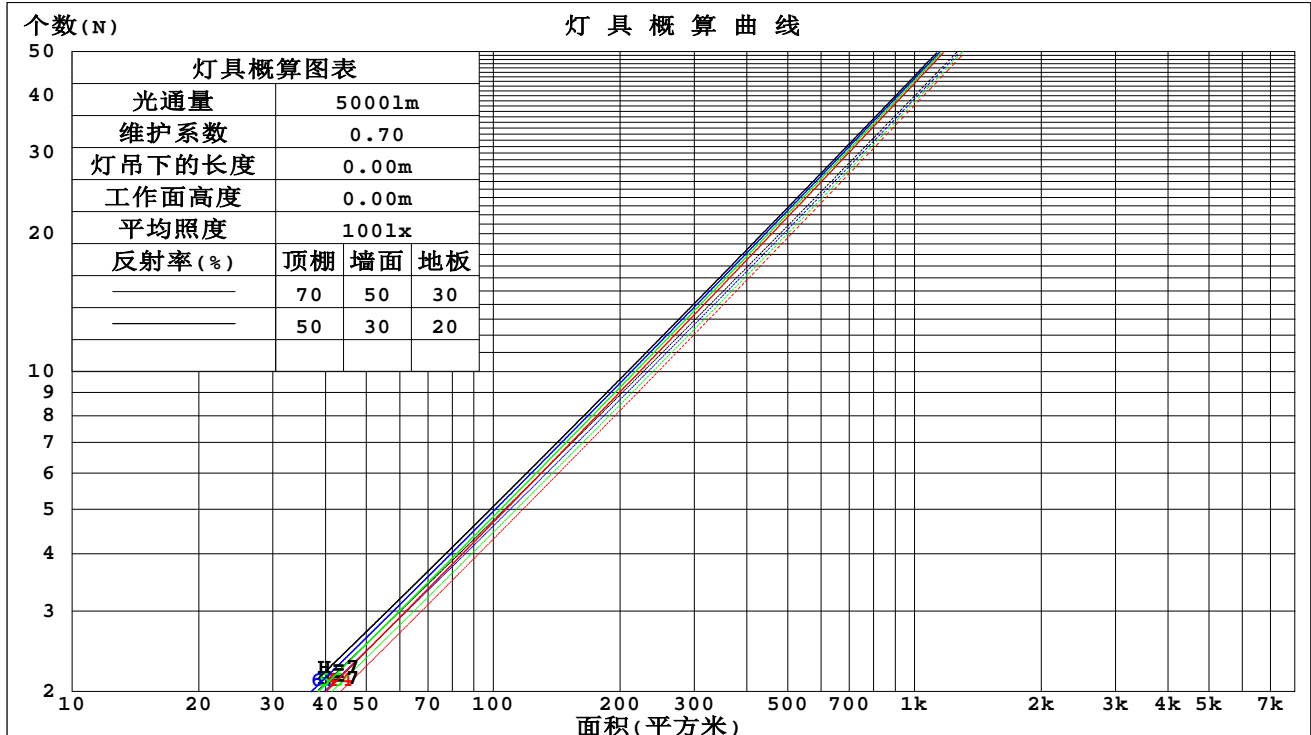
γ角度范围: 0度 - 180度  
γ角度间隔: 1.0度  
测试系统: 远方(EVERFINE)GO-SPEX500\_V1系统 V2.00.461  
环境湿度: 65.0%  
测试距离: 3.160米 [K=1.0000]  
备注: LAMP: BXRE-30G1000-A-83 Ra: 90  
LENS: PM-1083 15R  
DRIVER: PUP20A-1WMC 500mA  
30minutes warm-up

## 工作面利用系数和灯具概算曲线

实测参数: U:120.19V I:0.1755A P:20.993W PF:0.9940 Freq:59.98Hz  
实检光通: 1897.7x1 lm

|                       |                |                  |
|-----------------------|----------------|------------------|
| 灯具名称: 2418.121-LEA-15 | 灯具类型:          | 灯具重量:            |
| 灯具规格: 3000K           | 外型尺寸:          | 测试编号: 2407260947 |
| 制造厂商: RISE            | 发光口面: 0.0064m2 | 遮光角:             |

| 顶棚   | 80%           |     |     | 70% |     |     | 50% |     |     | 30% |     |     | 10% |     |     | 0   |
|------|---------------|-----|-----|-----|-----|-----|-----|-----|-----|-----|-----|-----|-----|-----|-----|-----|
| 墙面   | 50%           | 30% | 10% | 50% | 30% | 10% | 50% | 30% | 10% | 50% | 30% | 10% | 50% | 30% | 10% | 0   |
| 地板   | 20%           |     |     | 20% |     |     | 20% |     |     | 20% |     |     | 20% |     |     | 0   |
| 室空间比 | 工 作 面 利 用 系 数 |     |     |     |     |     |     |     |     |     |     |     |     |     |     |     |
| 0.0  | .76           | .76 | .76 | .74 | .74 | .74 | .71 | .71 | .71 | .68 | .68 | .68 | .65 | .65 | .65 | .64 |
| 1.0  | .73           | .72 | .71 | .71 | .70 | .69 | .69 | .68 | .67 | .66 | .66 | .65 | .64 | .64 | .63 | .62 |
| 2.0  | .70           | .68 | .67 | .69 | .67 | .66 | .67 | .65 | .64 | .65 | .64 | .63 | .63 | .62 | .62 | .61 |
| 3.0  | .67           | .65 | .64 | .66 | .65 | .63 | .65 | .63 | .62 | .63 | .62 | .61 | .62 | .61 | .60 | .59 |
| 4.0  | .65           | .63 | .61 | .64 | .62 | .61 | .63 | .61 | .60 | .62 | .61 | .59 | .61 | .60 | .59 | .58 |
| 5.0  | .63           | .61 | .59 | .63 | .60 | .59 | .62 | .60 | .58 | .61 | .59 | .58 | .60 | .59 | .57 | .57 |
| 6.0  | .61           | .59 | .57 | .61 | .59 | .57 | .60 | .58 | .57 | .59 | .58 | .57 | .59 | .57 | .56 | .56 |
| 7.0  | .60           | .58 | .56 | .59 | .57 | .56 | .59 | .57 | .56 | .58 | .57 | .55 | .58 | .56 | .55 | .54 |
| 8.0  | .58           | .56 | .55 | .58 | .56 | .54 | .58 | .56 | .54 | .57 | .55 | .54 | .57 | .55 | .54 | .53 |
| 9.0  | .57           | .55 | .53 | .57 | .55 | .53 | .56 | .54 | .53 | .56 | .54 | .53 | .56 | .54 | .53 | .52 |
| 10.0 | .56           | .54 | .52 | .56 | .54 | .52 | .55 | .53 | .52 | .55 | .53 | .52 | .55 | .53 | .52 | .51 |



C角度范围: 0度 - 360度  
C角度间隔: 30.0度  
测试速度: 快速  
环境温度: 25.3℃  
测试人员: zoe  
测试日期: 2024-7-26

Y角度范围: 0度 - 180度  
Y角度间隔: 1.0度  
测试系统: 远方(EVERFINE)GO-SPEX500\_V1系统 V2.00.461  
环境湿度: 65.0%  
测试距离: 3.160米 [K=1.0000]  
备注: LAMP: BXRE-30G1000-A-83 Ra:90  
LENS: PM-1083 15R  
DRIVER: PUP20A-1WMC 500mA  
30minutes warm-up

## 墙面和天花板利用系数

|   |  |  |                            |  |  |                  |  |  |
|---|--|--|----------------------------|--|--|------------------|--|--|
| 实测参数: U:120.19V I:0.1755A P:20.993W PF:0.9940 Freq:59.98Hz<br>实检光通: 1897.7x1 lm |  |  |                            |  |  |                  |  |  |
| 灯具名称: 2418.121-LEA-15   |  |  | 灯具类型:                      |  |  | 灯具重量:            |  |  |
| 灯具规格: 3000K   |  |  | 外型尺寸:                      |  |  | 测试编号: 2407260947 |  |  |
| 制造厂商: RISE  |  |  | 发光口面: 0.0064m <sup>2</sup> |  |  | 遮光角:             |  |  |

| 顶棚   | 80%           |      |      | 70%  |      |      | 50%  |      |      | 30%  |      |      | 10%  |      |      | 0 |
|------|---------------|------|------|------|------|------|------|------|------|------|------|------|------|------|------|---|
| 墙面   | 50%           | 30%  | 10%  | 50%  | 30%  | 10%  | 50%  | 30%  | 10%  | 50%  | 30%  | 10%  | 50%  | 30%  | 10%  | 0 |
| 地板   | 20%           |      |      | 20%  |      |      | 20%  |      |      | 20%  |      |      | 20%  |      |      | 0 |
| 室空间比 | 墙 壁 面 利 用 系 数 |      |      |      |      |      |      |      |      |      |      |      |      |      |      |   |
| 0.0  |               |      |      |      |      |      |      |      |      |      |      |      |      |      |      |   |
| 1.0  | .080          | .045 | .014 | .075 | .043 | .014 | .068 | .039 | .012 | .060 | .035 | .011 | .054 | .031 | .010 |   |
| 2.0  | .073          | .040 | .012 | .070 | .038 | .012 | .063 | .035 | .011 | .057 | .032 | .010 | .052 | .029 | .009 |   |
| 3.0  | .067          | .036 | .011 | .065 | .035 | .010 | .059 | .032 | .010 | .054 | .030 | .009 | .050 | .028 | .009 |   |
| 4.0  | .063          | .033 | .010 | .060 | .032 | .009 | .056 | .030 | .009 | .052 | .028 | .008 | .048 | .026 | .008 |   |
| 5.0  | .059          | .030 | .009 | .057 | .029 | .008 | .053 | .028 | .008 | .049 | .026 | .008 | .046 | .025 | .007 |   |
| 6.0  | .055          | .028 | .008 | .054 | .027 | .008 | .050 | .026 | .008 | .047 | .025 | .007 | .045 | .023 | .007 |   |
| 7.0  | .052          | .026 | .007 | .051 | .025 | .007 | .048 | .024 | .007 | .045 | .023 | .007 | .043 | .022 | .007 |   |
| 8.0  | .050          | .024 | .007 | .048 | .024 | .007 | .046 | .023 | .007 | .044 | .022 | .006 | .042 | .021 | .006 |   |
| 9.0  | .047          | .023 | .006 | .046 | .023 | .006 | .044 | .022 | .006 | .042 | .021 | .006 | .040 | .020 | .006 |   |
| 10.0 | .045          | .022 | .006 | .044 | .021 | .006 | .042 | .021 | .006 | .041 | .020 | .006 | .039 | .020 | .006 |   |

| 顶棚   | 80%     |      |      | 70%  |      |      | 50%  |      |      | 30%  |      |      | 10%  |      |      | 0 |
|------|---------|------|------|------|------|------|------|------|------|------|------|------|------|------|------|---|
| 墙面   | 50%     | 30%  | 10%  | 50%  | 30%  | 10%  | 50%  | 30%  | 10%  | 50%  | 30%  | 10%  | 50%  | 30%  | 10%  | 0 |
| 地板   | 20%     |      |      | 20%  |      |      | 20%  |      |      | 20%  |      |      | 20%  |      |      | 0 |
| 室空间比 | 天花板利用系数 |      |      |      |      |      |      |      |      |      |      |      |      |      |      |   |
| 0.0  | .122    | .122 | .122 | .104 | .104 | .104 | .071 | .071 | .071 | .041 | .041 | .041 | .013 | .013 | .013 |   |
| 1.0  | .107    | .101 | .095 | .092 | .087 | .082 | .063 | .060 | .057 | .036 | .034 | .033 | .012 | .011 | .011 |   |
| 2.0  | .095    | .085 | .076 | .081 | .073 | .066 | .056 | .051 | .046 | .032 | .029 | .027 | .010 | .010 | .009 |   |
| 3.0  | .085    | .072 | .062 | .073 | .062 | .054 | .050 | .043 | .038 | .029 | .025 | .022 | .009 | .008 | .007 |   |
| 4.0  | .077    | .062 | .052 | .066 | .054 | .045 | .045 | .038 | .032 | .026 | .022 | .019 | .008 | .007 | .006 |   |
| 5.0  | .069    | .054 | .043 | .060 | .047 | .038 | .041 | .033 | .027 | .024 | .019 | .016 | .008 | .006 | .005 |   |
| 6.0  | .063    | .048 | .037 | .055 | .041 | .032 | .038 | .029 | .023 | .022 | .017 | .013 | .007 | .006 | .004 |   |
| 7.0  | .058    | .043 | .031 | .050 | .037 | .027 | .035 | .026 | .019 | .020 | .015 | .012 | .007 | .005 | .004 |   |
| 8.0  | .054    | .038 | .027 | .046 | .033 | .024 | .032 | .023 | .017 | .019 | .014 | .010 | .006 | .004 | .003 |   |
| 9.0  | .050    | .034 | .024 | .043 | .030 | .021 | .030 | .021 | .015 | .017 | .012 | .009 | .006 | .004 | .003 |   |
| 10.0 | .047    | .031 | .021 | .041 | .027 | .018 | .028 | .019 | .013 | .016 | .011 | .008 | .005 | .004 | .003 |   |

C角度范围: 0度 - 360度  
 C角度间隔: 30.0度  
 测试速度: 快速  
 环境温度: 25.3℃  
 测试人员: zoe  
 测试日期: 2024-7-26

γ角度范围: 0度 - 180度  
 γ角度间隔: 1.0度  
 测试系统: 远方(EVERFINE)GO-SPEX500\_V1系统 V2.00.461  
 环境湿度: 65.0%  
 测试距离: 3.160米 [K=1.0000]  
 备注: LAMP: BXRE-30G1000-A-83 Ra:90  
 LENS: PM-1083 15R  
 DRIVER: PUP20A-1WMC 500mA  
 30minutes warm-up

## UGR(Unified Glare Rating)数据表

|   |     |                      |      |      |                |      |                    |                  |      |      |      |      |
|---|-----|----------------------|------|------|----------------|------|--------------------|------------------|------|------|------|------|
| 实测参数: U:120.19V I:0.1755A P:20.993W PF:0.9940 Freq:59.98Hz<br>实检光通: 1897.7x1 lm |     |                      |      |      |                |      |                    |                  |      |      |      |      |
| 灯具名称: 2418.121-LEA-15   |     |                      |      |      | 灯具类型:          |      |                    | 灯具重量:            |      |      |      |      |
| 灯具规格: 3000K   |     |                      |      |      | 外型尺寸:          |      |                    | 测试编号: 2407260947 |      |      |      |      |
| 制造厂商: RISE  |     |                      |      |      | 发光口面: 0.0064m2 |      |                    | 遮光角:             |      |      |      |      |
| 反射比:  | 天花板 | 0.7                  | 0.7  | 0.5  | 0.5            | 0.3  | 0.7                | 0.7              | 0.5  | 0.5  | 0.3  |      |
|   | 墙面  | 0.5                  | 0.3  | 0.5  | 0.3            | 0.3  | 0.5                | 0.3              | 0.5  | 0.3  | 0.3  |      |
|   | 工作面 | 0.2                  | 0.2  | 0.2  | 0.2            | 0.2  | 0.2                | 0.2              | 0.2  | 0.2  | 0.2  |      |
| 房间尺寸  |     | 横向(Viewed crosswise) |      |      |                |      | 纵向(Viewed endwise) |                  |      |      |      |      |
| x = 2H y = 2H   | 2H  | -2.6                 | -2.0 | -2.4 | -1.9           | -1.7 | -3.3               | -2.8             | -3.1 | -2.6 | -2.5 |      |
|   | 3H  | -2.7                 | -2.2 | -2.5 | -2.0           | -1.8 | -3.5               | -3.0             | -3.3 | -2.8 | -2.6 |      |
|   | 4H  | -2.8                 | -2.3 | -2.6 | -2.1           | -1.9 | -3.6               | -3.1             | -3.3 | -2.8 | -2.6 |      |
|   | 6H  | -2.9                 | -2.4 | -2.6 | -2.2           | -2.0 | -3.6               | -3.2             | -3.4 | -2.9 | -2.7 |      |
|   | 8H  | -2.9                 | -2.5 | -2.7 | -2.2           | -2.0 | -3.7               | -3.2             | -3.4 | -3.0 | -2.7 |      |
|   | 12H | -3.0                 | -2.5 | -2.7 | -2.3           | -2.0 | -3.7               | -3.3             | -3.4 | -3.0 | -2.8 |      |
|   | 4H  | 2H                   | -2.8 | -2.3 | -2.6           | -2.1 | -1.9               | -3.6             | -3.0 | -3.3 | -2.8 | -2.6 |
|   |     | 3H                   | -3.0 | -2.5 | -2.7           | -2.3 | -2.0               | -3.7             | -3.3 | -3.4 | -3.0 | -2.8 |
|   |     | 4H                   | -3.1 | -2.7 | -2.7           | -2.4 | -2.1               | -3.8             | -3.4 | -3.5 | -3.1 | -2.8 |
|   |     | 6H                   | -3.2 | -2.8 | -2.8           | -2.5 | -2.1               | -3.9             | -3.6 | -3.6 | -3.2 | -2.9 |
|   |     | 8H                   | -3.2 | -2.9 | -2.8           | -2.5 | -2.2               | -4.0             | -3.6 | -3.6 | -3.3 | -2.9 |
|   |     | 12H                  | -3.3 | -3.0 | -2.9           | -2.6 | -2.2               | -4.0             | -3.7 | -3.6 | -3.3 | -3.0 |
| 8H  | 4H  | -3.2                 | -2.9 | -2.9 | -2.5           | -2.2 | -4.0               | -3.6             | -3.6 | -3.3 | -2.9 |      |
|   | 6H  | -3.4                 | -3.1 | -2.9 | -2.7           | -2.3 | -4.1               | -3.8             | -3.7 | -3.4 | -3.0 |      |
|   | 8H  | -3.4                 | -3.2 | -3.0 | -2.7           | -2.3 | -4.2               | -3.9             | -3.7 | -3.5 | -3.0 |      |
|   | 12H | -3.5                 | -3.2 | -3.0 | -2.8           | -2.3 | -4.2               | -4.0             | -3.7 | -3.5 | -3.1 |      |
| 12H   | 4H  | -3.3                 | -3.0 | -2.9 | -2.6           | -2.2 | -4.0               | -3.7             | -3.6 | -3.4 | -3.0 |      |
|   | 6H  | -3.4                 | -3.2 | -3.0 | -2.7           | -2.3 | -4.2               | -3.9             | -3.7 | -3.5 | -3.0 |      |
|   | 8H  | -3.5                 | -3.3 | -3.0 | -2.8           | -2.3 | -4.2               | -4.0             | -3.8 | -3.6 | -3.1 |      |
| 不同间隔布灯时,观察者位置引起的UGR变化(CIE Pub.117):   |     |                      |      |      |                |      |                    |                  |      |      |      |      |
| S = 1.0H  |     | + 3.1 / - 9.7        |      |      |                |      | + 3.3 / -11.3      |                  |      |      |      |      |
| 1.5H  |     | + 4.9 / - 9.4        |      |      |                |      | + 5.1 / -10.3      |                  |      |      |      |      |
| 2.0H  |     | + 5.7 / - 5.7        |      |      |                |      | + 5.8 / - 8.9      |                  |      |      |      |      |

依据CIE Pub.117计算, 1898lm光源光通表格中的数据需要进行修正( $8\log(F/F_0) = 2.2$ )。  
出光口面积: 0.0064 m<sup>2</sup>

C角度范围: 0度 - 360度  
C角度间隔: 30.0度  
测试速度: 快速  
环境温度: 25.3℃  
测试人员: zoe  
测试日期: 2024-7-26

γ角度范围: 0度 - 180度  
γ角度间隔: 1.0度  
测试系统: 远方(EVERFINE)GO-SPEX500\_V1系统 V2.00.461  
环境湿度: 65.0%  
测试距离: 3.160米 [K=1.0000]  
备注: LAMP: BXRE-30G1000-A-83 Ra: 90  
LENS: PM-1083 15R  
DRIVER: PUP20A-1WMC 500mA  
30minutes warm-up



## UF利用系数表

|   |                |                  |
|---|----------------|------------------|
| 实测参数: U:120.19V I:0.1755A P:20.993W PF:0.9940 Freq:59.98Hz<br>实检光通: 1897.7x1 lm |                |                  |
| 灯具名称: 2418.121-LEA-15   | 灯具类型:          | 灯具重量:            |
| 灯具规格: 3000K   | 外型尺寸:          | 测试编号: 2407260947 |
| 制造厂商: RISE  | 发光口面: 0.0064m2 | 遮光角:             |

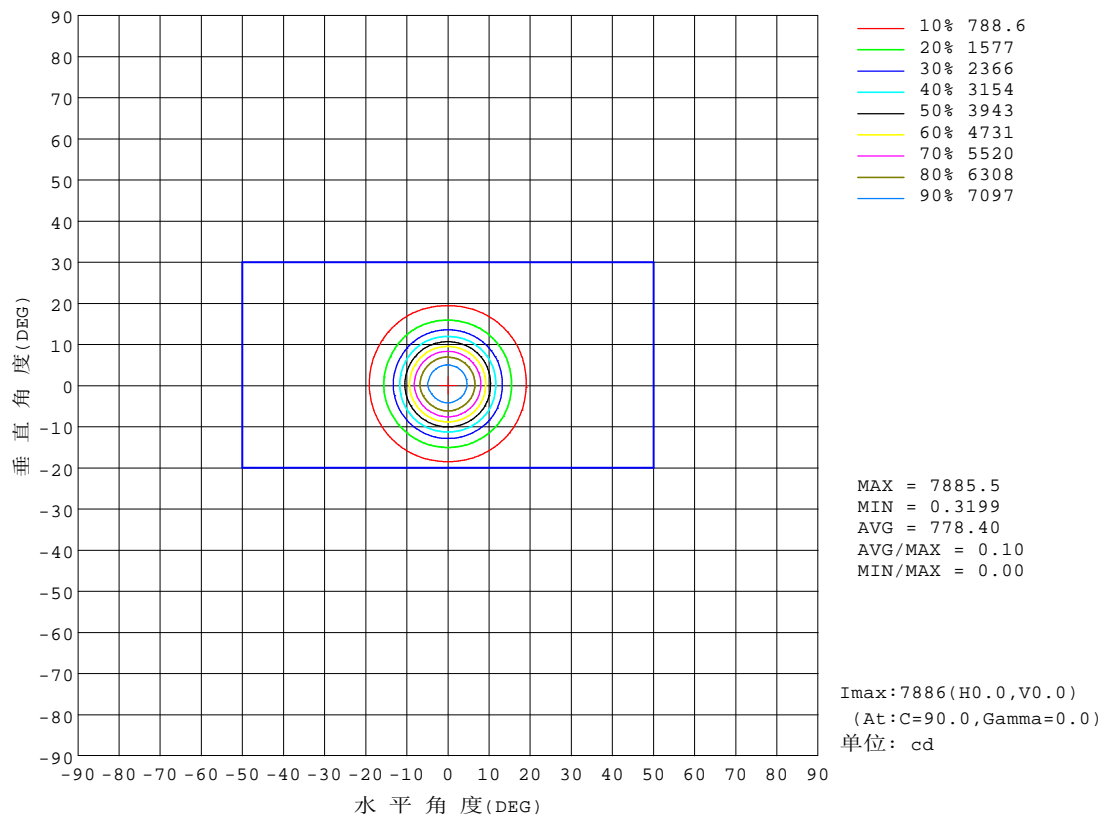
| 反 射 比 / REFLECTANCE        |  |     |     |     |     |     |                     |     |     |        |
|----------------------------|--|-----|-----|-----|-----|-----|---------------------|-----|-----|--------|
| 天花板                        | 0.8  | 0.8 | 0.8 | 0.7 | 0.7 | 0.7 | 0.5                 | 0.5 | 0.5 | 0      |
| 墙壁                         | 0.7  | 0.5 | 0.3 | 0.7 | 0.5 | 0.3 | 0.7                 | 0.5 | 0.3 | 0      |
| 工作面                        | 0.2  | 0.2 | 0.2 | 0.2 | 0.2 | 0.2 | 0.2                 | 0.2 | 0.2 | 0      |
| 室形指数                       | 利用系数 UTILIZATION FACTORS(%) $k(RI) \times RCR = 5$ |     |     |     |     |     |                     |     |     |        |
| $k = 0.60$                 | 59   | 55  | 53  | 58  | 55  | 53  | 58                  | 55  | 53  | 51     |
| 0.80                       | 63   | 60  | 58  | 62  | 59  | 57  | 62                  | 59  | 57  | 55     |
| 1.00                       | 65   | 62  | 60  | 65  | 62  | 60  | 64                  | 62  | 60  | 57     |
| 1.25                       | 67   | 65  | 63  | 67  | 64  | 62  | 66                  | 63  | 62  | 59     |
| 1.50                       | 69   | 66  | 64  | 68  | 66  | 64  | 67                  | 65  | 63  | 61     |
| 2.00                       | 70   | 68  | 66  | 69  | 67  | 66  | 68                  | 66  | 65  | 62     |
| 2.50                       | 71   | 69  | 67  | 70  | 68  | 67  | 68                  | 67  | 66  | 62     |
| 3.00                       | 72   | 70  | 69  | 71  | 69  | 68  | 69                  | 68  | 67  | 63     |
| 4.00                       | 73   | 72  | 71  | 72  | 71  | 70  | 70                  | 69  | 68  | 63     |
| 5.00                       | 74   | 73  | 72  | 73  | 72  | 71  | 70                  | 69  | 69  | 64     |
| ROOM INDEX                 | UF(总)  |     |     |     |     |     |                     |     |     | UF(直接) |
| 依据标准文件 DIN EN 13032-2 2004 |  |     | 悬挂灯 |     |     |     | 安装距高比 SHRNOM = 1.25 |     |     |        |

C角度范围: 0度 - 360度  
C角度间隔: 30.0度  
测试速度: 快速  
环境温度: 25.3℃  
测试人员: zoe  
测试日期: 2024-7-26

Y角度范围: 0度 - 180度  
Y角度间隔: 1.0度  
测试系统: 远方(EVERFINE)GO-SPEX500\_V1系统 V2.00.461  
环境湿度: 65.0%  
测试距离: 3.160米 [K=1.0000]  
备注: LAMP: BXRE-30G1000-A-83 Ra: 90  
LENS: PM-1083 15R  
DRIVER: PUP20A-1WMC 500mA  
30minutes warm-up

## 灯具等光强曲线

|   |                            |                  |
|---|----------------------------|------------------|
| 实测参数: U:120.19V I:0.1755A P:20.993W PF:0.9940 Freq:59.98Hz<br>实检光通: 1897.7x1 lm |                            |                  |
| 灯具名称: 2418.121-LEA-15   | 灯具类型:                      | 灯具重量:            |
| 灯具规格: 3000K   | 外型尺寸:                      | 测试编号: 2407260947 |
| 制造厂商: RISE  | 发光口面: 0.0064m <sup>2</sup> | 遮光角:             |

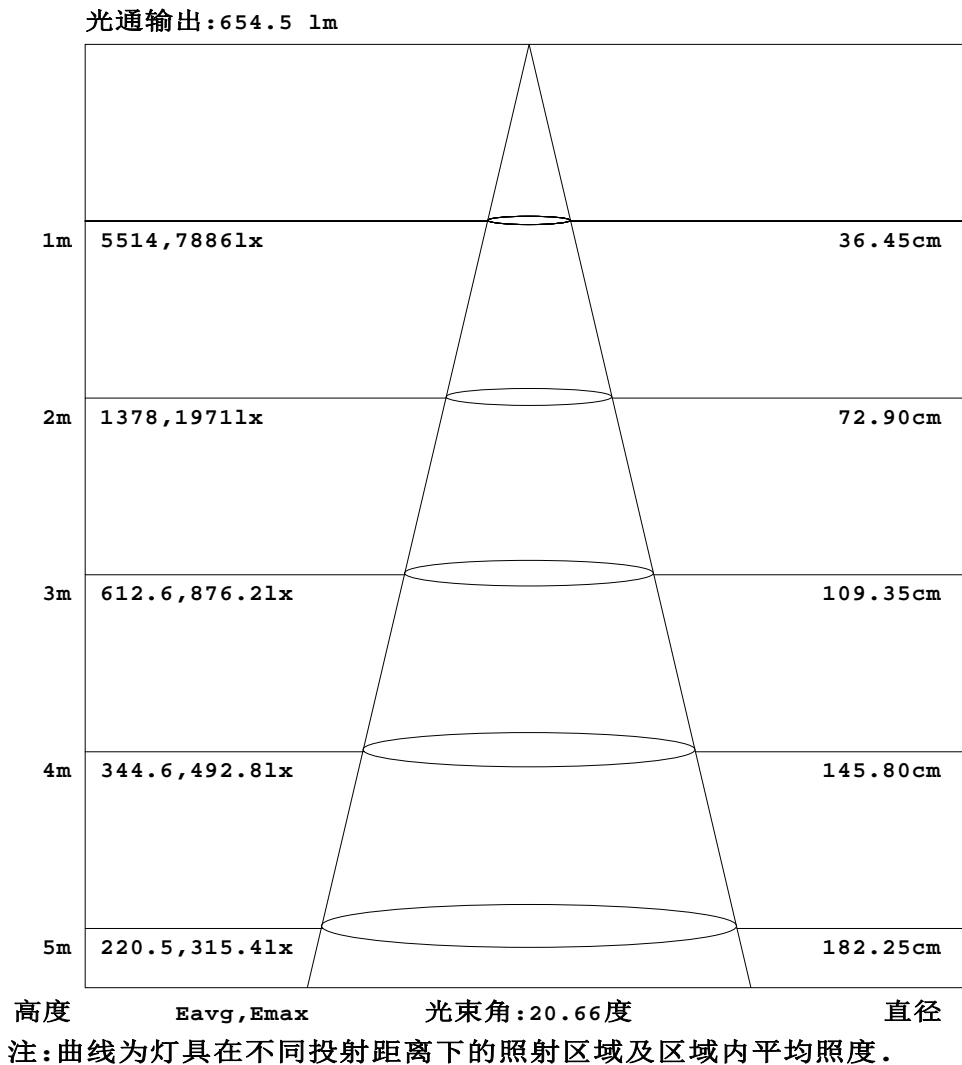


c角度范围: 0度 - 360度  
c角度间隔: 30.0度  
测试速度: 快速  
环境温度: 25.3℃  
测试人员: zoe  
测试日期: 2024-7-26

γ角度范围: 0度 - 180度  
γ角度间隔: 1.0度  
测试系统: 远方(EVERFINE)GO-SPEX500\_V1系统 V2.00.461  
环境湿度: 65.0%  
测试距离: 3.160米 [K=1.0000]  
备注: LAMP: BXRE-30G1000-A-83 Ra:90  
LENS: PM-1083 15R  
DRIVER: PUP20A-1WMC 500mA  
30minutes warm-up

## 灯具有效平均照度图

|   |                            |                  |
|---|----------------------------|------------------|
| 实测参数: U:120.19V I:0.1755A P:20.993W PF:0.9940 Freq:59.98Hz<br>实检光通: 1897.7x1 lm |                            |                  |
| 灯具名称: 2418.121-LEA-15   | 灯具类型:                      | 灯具重量:            |
| 灯具规格: 3000K   | 外型尺寸:                      | 测试编号: 2407260947 |
| 制造厂商: RISE  | 发光口面: 0.0064m <sup>2</sup> | 遮光角:             |

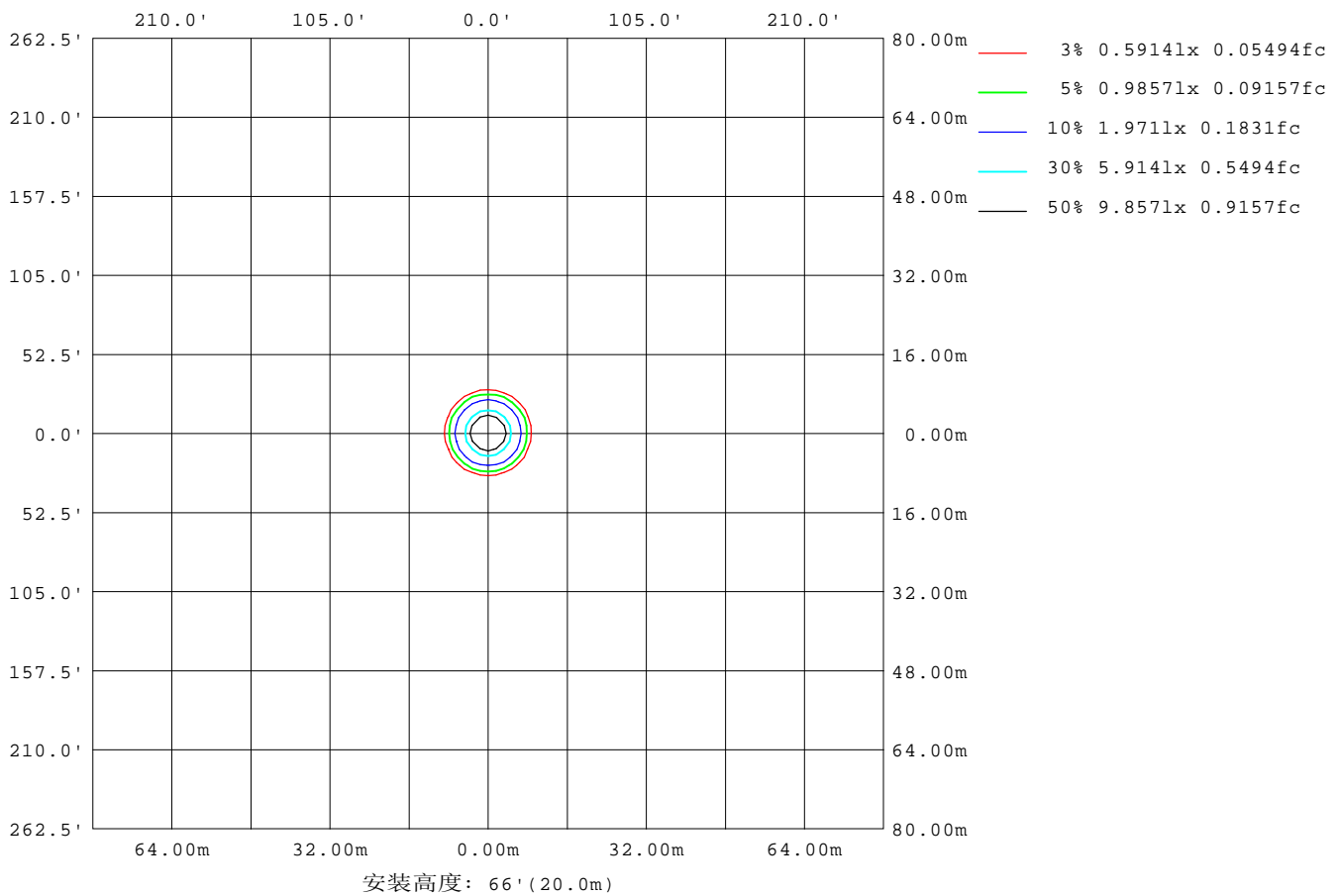


C角度范围: 0度 - 360度  
 C角度间隔: 30.0度  
 测试速度: 快速  
 环境温度: 25.3℃  
 测试人员: zoe  
 测试日期: 2024-7-26

γ角度范围: 0度 - 180度  
 γ角度间隔: 1.0度  
 测试系统: 远方(EVERFINE)GO-SPEX500\_V1系统 V2.00.461  
 环境湿度: 65.0%  
 测试距离: 3.160米 [K=1.0000]  
 备注: LAMP: BXRE-30G1000-A-83 Ra: 90  
 LENS: PM-1083 15R  
 DRIVER: PUP20A-1WMC 500mA  
 30minutes warm-up

## 平面等照度曲线

|   |                            |                  |
|---|----------------------------|------------------|
| 实测参数: U:120.19V I:0.1755A P:20.993W PF:0.9940 Freq:59.98Hz<br>实检光通: 1897.7x1 lm |                            |                  |
| 灯具名称: 2418.121-LEA-15   | 灯具类型:                      | 灯具重量:            |
| 灯具规格: 3000K   | 外型尺寸:                      | 测试编号: 2407260947 |
| 制造厂商: RISE  | 发光口面: 0.0064m <sup>2</sup> | 遮光角:             |



C角度范围: 0度 - 360度  
 C角度间隔: 30.0度  
 测试速度: 快速  
 环境温度: 25.3℃  
 测试人员: zoe  
 测试日期: 2024-7-26

Y角度范围: 0度 - 180度  
 Y角度间隔: 1.0度  
 测试系统: 远方(EVERFINE)GO-SPEX500\_V1系统 V2.00.461  
 环境湿度: 65.0%  
 测试距离: 3.160米 [K=1.0000]  
 备注: LAMP: BXRE-30G1000-A-83 Ra:90  
 LENS: PM-1083 15R  
 DRIVER: PUP20A-1WMC 500mA  
 30minutes warm-up

## LED筒灯平均亮度报告

|   |                |                  |
|---|----------------|------------------|
| 实测参数: U:120.19V I:0.1755A P:20.993W PF:0.9940 Freq:59.98Hz<br>实检光通: 1897.7x1 lm |                |                  |
| 灯具名称: 2418.121-LEA-15   | 灯具类型:          | 灯具重量:            |
| 灯具规格: 3000K   | 外型尺寸:          | 测试编号: 2407260947 |
| 制造厂商: RISE  | 发光口面: 0.0064m2 | 遮光角:             |

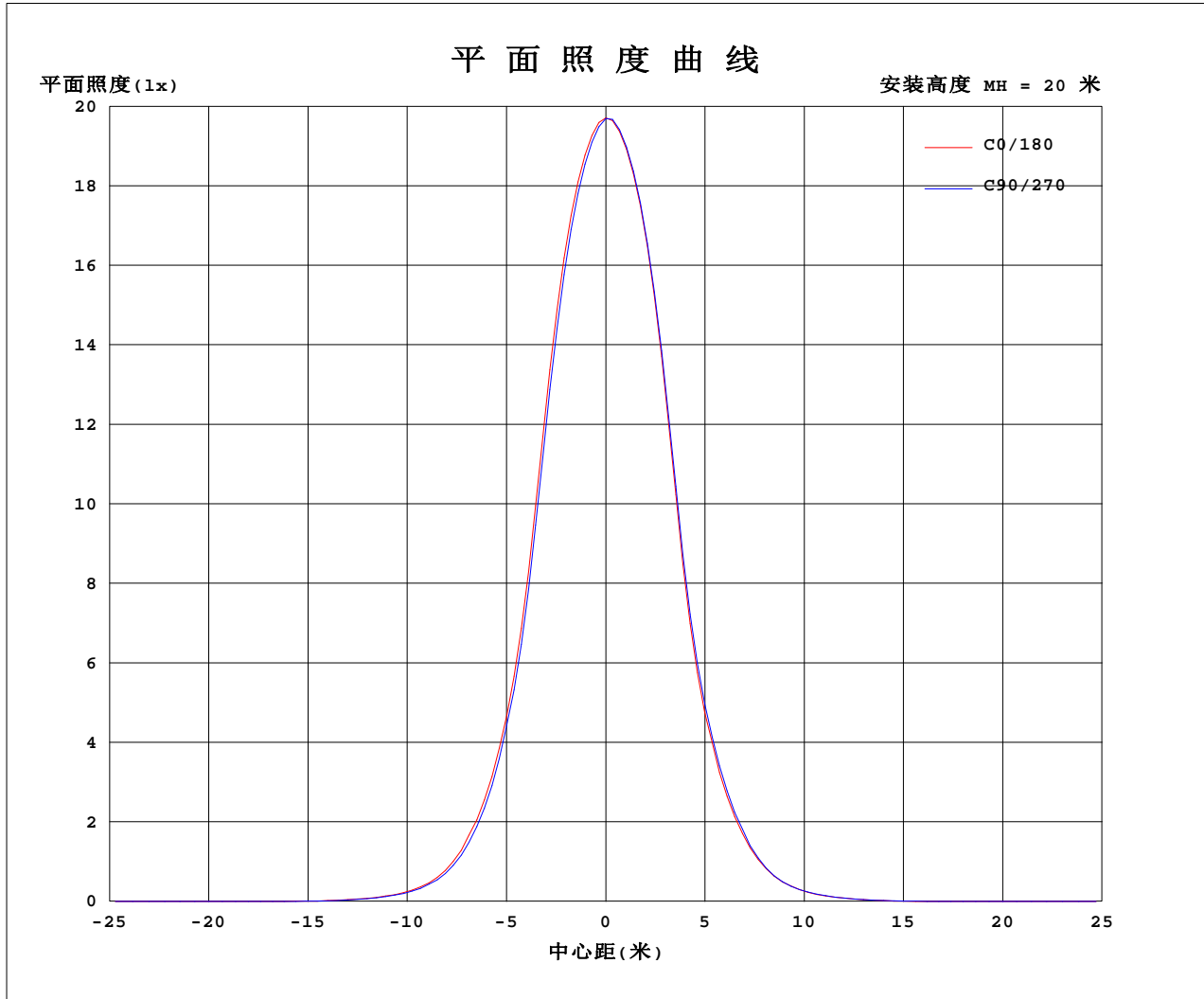
| 平均亮度      | 数值(cd/m2) |
|-----------|-----------|
| L横(65)av  | 56        |
| L横(75)av  | 31        |
| L横(85)av  | 98        |
| L纵(65)av  | 31        |
| L纵(75)av  | 21        |
| L纵(85)av  | 68        |
| L45(65)av | 43        |
| L45(75)av | 17        |
| L45(85)av | 36        |

注:依据标准 GB/T 29293-2012 计算

C角度范围: 0度 - 360度  
 C角度间隔: 30.0度  
 测试速度: 快速  
 环境温度: 25.3℃  
 测试人员: zoe  
 测试日期: 2024-7-26

Y角度范围: 0度 - 180度  
 Y角度间隔: 1.0度  
 测试系统: 远方(EVERFINE)GO-SPEX500\_V1系统 V2.00.461  
 环境湿度: 65.0%  
 测试距离: 3.160米 [K=1.0000]  
 备注: LAMP: BXRE-30G1000-A-83 Ra:90  
 LENS: PM-1083 15R  
 DRIVER: PUP20A-1WMC 500mA  
 30minutes warm-up

## 平面照度曲线



C角度范围: 0度 - 360度  
 C角度间隔: 30.0度  
 测试速度: 快速  
 环境温度: 25.3℃  
 测试人员: zoe  
 测试日期: 2024-7-26

Y角度范围: 0度 - 180度  
 Y角度间隔: 1.0度  
 测试系统: 远方(EVERFINE)GO-SPEX500\_V1系统 V2.00.461  
 环境湿度: 65.0%  
 测试距离: 3.160米 [K=1.0000]  
 备注: LAMP: BXRE-30G1000-A-83 Ra: 90  
 LENS: PM-1083 15R  
 DRIVER: PUP20A-1WMC 500mA  
 30minutes warm-up



光 强 分 布 数 据 表 格

|   |                |                  |
|---|----------------|------------------|
| 实测参数: U:120.19V I:0.1755A P:20.993W PF:0.9940 Freq:59.98Hz<br>实检光通: 1897.7x1 lm |                |                  |
| 灯具名称: 2418.121-LEA-15   | 灯具类型:          | 灯具重量:            |
| 灯具规格: 3000K   | 外型尺寸:          | 测试编号: 2407260947 |
| 制造厂商: RISE  | 发光口面: 0.0064m2 | 遮光角:             |

| 表--1              |      |      |      |      |      |      |      |      |      |      |      |      |  | 单位: cd |  |  |  |  |
|-------------------|------|------|------|------|------|------|------|------|------|------|------|------|--|--------|--|--|--|--|
| C(DEG)<br>γ (DEG) | 0    | 30   | 60   | 90   | 120  | 150  | 180  | 210  | 240  | 270  | 300  | 330  |  |        |  |  |  |  |
| 0                 | 7879 | 7879 | 7879 | 7879 | 7879 | 7879 | 7879 | 7879 | 7879 | 7879 | 7879 | 7879 |  |        |  |  |  |  |
| 5                 | 6976 | 6881 | 6811 | 6838 | 6840 | 6915 | 7076 | 7063 | 7096 | 7109 | 7070 | 7043 |  |        |  |  |  |  |
| 10                | 4169 | 4108 | 4003 | 3967 | 4017 | 4119 | 4282 | 4319 | 4399 | 4375 | 4373 | 4315 |  |        |  |  |  |  |
| 15                | 1710 | 1689 | 1613 | 1595 | 1613 | 1664 | 1773 | 1758 | 1864 | 1836 | 1855 | 1779 |  |        |  |  |  |  |
| 20                | 624  | 618  | 586  | 564  | 593  | 617  | 652  | 667  | 711  | 679  | 698  | 682  |  |        |  |  |  |  |
| 25                | 197  | 217  | 200  | 179  | 205  | 219  | 212  | 236  | 233  | 207  | 238  | 230  |  |        |  |  |  |  |
| 30                | 65.1 | 76.1 | 72.7 | 59.2 | 76.6 | 76.7 | 67.5 | 85.4 | 82.0 | 70.2 | 83.7 | 81.1 |  |        |  |  |  |  |
| 35                | 17.2 | 27.6 | 25.6 | 13.9 | 26.5 | 26.9 | 17.2 | 29.6 | 29.4 | 18.1 | 30.3 | 27.6 |  |        |  |  |  |  |
| 40                | 5.20 | 7.49 | 5.84 | 4.37 | 5.88 | 5.82 | 4.45 | 7.51 | 6.67 | 5.23 | 7.83 | 6.19 |  |        |  |  |  |  |
| 45                | 3.05 | 3.52 | 3.15 | 2.23 | 2.79 | 2.73 | 2.45 | 2.96 | 3.52 | 3.07 | 3.32 | 3.14 |  |        |  |  |  |  |
| 50                | 0.80 | 1.77 | 1.09 | 0.59 | 0.51 | 1.18 | 0.44 | 1.26 | 1.39 | 0.83 | 1.36 | 1.37 |  |        |  |  |  |  |
| 55                | 0.51 | 0.59 | 0.60 | 0.33 | 0.24 | 0.23 | 0.26 | 0.43 | 0.64 | 0.54 | 0.48 | 0.51 |  |        |  |  |  |  |
| 60                | 0.36 | 0.40 | 0.28 | 0.14 | 0.17 | 0.20 | 0.18 | 0.28 | 0.31 | 0.28 | 0.31 | 0.39 |  |        |  |  |  |  |
| 65                | 0.14 | 0.16 | 0.06 | 0.10 | 0.12 | 0.16 | 0.16 | 0.09 | 0.06 | 0.07 | 0.09 | 0.19 |  |        |  |  |  |  |
| 70                | 0.07 | 0.04 | 0.03 | 0.04 | 0.03 | 0.08 | 0.09 | 0.06 | 0.03 | 0.03 | 0.04 | 0.04 |  |        |  |  |  |  |
| 75                | 0.06 | 0.03 | 0.03 | 0.04 | 0.03 | 0.03 | 0.05 | 0.03 | 0.02 | 0.03 | 0.03 | 0.03 |  |        |  |  |  |  |
| 80                | 0.06 | 0.03 | 0.02 | 0.04 | 0.04 | 0.03 | 0.05 | 0.03 | 0.02 | 0.04 | 0.06 | 0.02 |  |        |  |  |  |  |
| 85                | 0.06 | 0.03 | 0.01 | 0.04 | 0.05 | 0.02 | 0.05 | 0.02 | 0.01 | 0.03 | 0.01 | 0.03 |  |        |  |  |  |  |
| 90                | 0.00 | 0.00 | 0.00 | 0.00 | 0.00 | 0.00 | 0.00 | 0.00 | 0.00 | 0.00 | 0.00 | 0.00 |  |        |  |  |  |  |
| 95                | 0.00 | 0.00 | 0.00 | 0.00 | 0.00 | 0.00 | 0.00 | 0.00 | 0.00 | 0.00 | 0.00 | 0.00 |  |        |  |  |  |  |
| 100               | 0.00 | 0.00 | 0.00 | 0.00 | 0.00 | 0.00 | 0.00 | 0.00 | 0.00 | 0.00 | 0.00 | 0.00 |  |        |  |  |  |  |
| 105               | 0.00 | 0.00 | 0.00 | 0.00 | 0.00 | 0.00 | 0.00 | 0.00 | 0.00 | 0.00 | 0.00 | 0.00 |  |        |  |  |  |  |
| 110               | 0.00 | 0.00 | 0.00 | 0.00 | 0.00 | 0.00 | 0.00 | 0.00 | 0.00 | 0.00 | 0.00 | 0.00 |  |        |  |  |  |  |
| 115               | 0.00 | 0.00 | 0.00 | 0.00 | 0.00 | 0.00 | 0.00 | 0.00 | 0.00 | 0.00 | 0.00 | 0.00 |  |        |  |  |  |  |
| 120               | 0.00 | 0.00 | 0.00 | 0.00 | 0.00 | 0.00 | 0.00 | 0.00 | 0.00 | 0.00 | 0.00 | 0.00 |  |        |  |  |  |  |
| 125               | 0.00 | 0.00 | 0.00 | 0.00 | 0.00 | 0.00 | 0.00 | 0.00 | 0.00 | 0.00 | 0.00 | 0.00 |  |        |  |  |  |  |
| 130               | 0.00 | 0.00 | 0.00 | 0.00 | 0.00 | 0.00 | 0.00 | 0.00 | 0.00 | 0.00 | 0.00 | 0.00 |  |        |  |  |  |  |
| 135               | 0.00 | 0.00 | 0.00 | 0.00 | 0.00 | 0.00 | 0.00 | 0.00 | 0.00 | 0.00 | 0.00 | 0.00 |  |        |  |  |  |  |
| 140               | 0.00 | 0.00 | 0.00 | 0.00 | 0.00 | 0.00 | 0.00 | 0.00 | 0.00 | 0.00 | 0.00 | 0.00 |  |        |  |  |  |  |
| 145               | 0.00 | 0.00 | 0.00 | 0.00 | 0.00 | 0.00 | 0.00 | 0.00 | 0.00 | 0.00 | 0.00 | 0.00 |  |        |  |  |  |  |
| 150               | 0.00 | 0.00 | 0.00 | 0.00 | 0.00 | 0.00 | 0.00 | 0.00 | 0.00 | 0.00 | 0.00 | 0.00 |  |        |  |  |  |  |
| 155               | 0.00 | 0.00 | 0.00 | 0.00 | 0.00 | 0.00 | 0.00 | 0.00 | 0.00 | 0.00 | 0.00 | 0.00 |  |        |  |  |  |  |
| 160               | 0.00 | 0.00 | 0.00 | 0.00 | 0.00 | 0.00 | 0.00 | 0.00 | 0.00 | 0.00 | 0.00 | 0.00 |  |        |  |  |  |  |
| 165               | 0.00 | 0.00 | 0.00 | 0.00 | 0.00 | 0.00 | 0.00 | 0.00 | 0.00 | 0.00 | 0.00 | 0.00 |  |        |  |  |  |  |
| 170               | 0.00 | 0.00 | 0.00 | 0.00 | 0.00 | 0.00 | 0.00 | 0.00 | 0.00 | 0.00 | 0.00 | 0.00 |  |        |  |  |  |  |
| 175               | 0.00 | 0.00 | 0.00 | 0.00 | 0.00 | 0.00 | 0.00 | 0.00 | 0.00 | 0.00 | 0.00 | 0.00 |  |        |  |  |  |  |
| 180               | 0.00 | 0.00 | 0.00 | 0.00 | 0.00 | 0.00 | 0.00 | 0.00 | 0.00 | 0.00 | 0.00 | 0.00 |  |        |  |  |  |  |

C角度范围: 0度 - 360度  
C角度间隔: 30.0度  
测试速度: 快速  
环境温度: 25.3℃  
测试人员: zoe  
测试日期: 2024-7-26

γ角度范围: 0度 - 180度  
γ角度间隔: 1.0度  
测试系统: 远方(EVERFINE)GO-SPEX500\_V1系统 V2.00.461  
环境湿度: 65.0%  
测试距离: 3.160米 [K=1.0000]  
备注: LAMP:BXRE-30G1000-A-83 Ra:90  
LENS;PM-1083 15R  
DRIVER: PUP20A-1WMC 500mA  
30minutes warm-up